

OUR PHILOSOPHY



At the Health & Welfare Council of Long Island (HWCLI), our work is to ensure that our region is a welcoming and inclusive place for everyone to live. We can set the standard for what an equitable region looks like. That means safe communities, decent, affordable housing, healthy food, access to care and an opportunity to thrive.

In our quest for improvements and systemic change, we face a unique set of obstacles. In fact, the poverty rate today is at its highest since 1959. Given the national political climate and assault on the country's most vulnerable communities, our work is more important than ever.

The following pages will provide an overview of our work and accomplishments in 2018. While we celebrate goals reached, we are committed to tackling the challenges ahead. Please join us in creating a Long Island where everyone has equitable opportunities without barriers.

We are committed to the belief that everyone should have access to a quality, affordable health care. So we help people enroll in the insurance marketplace. [\(PAGE 8\)](#)

We know your zip code shouldn't determine your health outcome. So we're building region-wide infrastructure to advance health equity. [\(PAGE 8\)](#)

Nobody should have to choose between paying their rent and feeding their family, so we enroll people in food security programs. [\(PAGE 8\)](#)

We advance the community-wide response to natural and manmade disasters and connect people to resources to get back on their feet. [\(PAGE 9\)](#)

We know that Long Island's diversity is a strength. So we work with our immigration partners to improve life for our newest neighbors. [\(PAGE 9\)](#)

Long Island's voice should be amplified at the state and national levels. We bring community leaders together with government officials to have candid conversations and implement policies that will improve people's lives from Montauk to Elmont.



FROM OUR LEADERSHIP

Dear Agency Partners and Friends,

What an extraordinary year it has been at the Health & Welfare Council of Long Island! During 2018, HWCLI strengthened the link between the nonprofit sector, government, businesses, managed care organizations, school districts, and higher education. We kicked off the year by inviting the Lieutenant Governor to address our network of nonprofits and discuss the state of the state on Long Island, with a focus on health and human services. To meet the region's changing demographics, HWCLI leveraged its role as a convener to expand relationships by working with school districts, building committees and task forces with county government and problem-solving around issues as concrete as value-based contracting and as complex as restructuring human services.

This year HWCLI also hosted a health equity summit and built a strategic alliance so that, as one of the most segregated regions in the country, we can challenge the notion that zip code determines health outcomes and social mobility. We hosted a conference, *Lessons Learned from Superstorm Sandy*, bringing together disaster experts from across the state. HWCLI actively responded to the anti-immigrant sentiment that, while catalyzed by national policy, has had serious local impact. While advocating and partnering with federal, state and local partners on policy issues, we also expanded direct services, enrolling almost 2,000 individuals in health insurance, 4,000 people in SNAP and doubling our VITA services to low and middle income Long Islanders.

HWCLI has been able to advance each of these critical issues impacting our communities because of our network's collaboration and partnership, our funders' support, our board's leadership, and our staff's hard work and dedication. We thank you all.

Now more than ever, we live in a time in which the nonprofit sector must meet the ever-growing needs that emerge as the national assault on health and human services reaches new heights. 2019 will be a transformative year at the Health and Welfare Council of Long Island and one you do not want to miss! Email us at connect@hwcli.com to learn more about how you can become engaged in shaping Long Island's future. Long Island is America's first suburb, and while it was built as a land of promise only for some, we're creating a future where each and every family can live, work, and thrive, not simply survive. We look forward to moving forward together!

Sincerely,



REBECCA SANIN
President/CEO



DAVID NEMIROFF
Chair, Board of Directors



BOARD OF DIRECTORS

DAVID NEMIROFF, BOARD CHAIR

*President/Chief Executive Officer
Long Island Federally Qualified Health Centers*



ADRIAN FASSETT, VICE CHAIR

*President/Chief Executive Officer
EOC of Suffolk, Inc.*

JOANN SMITH, VICE CHAIR

*President/Chief Executive Officer
Planned Parenthood of Nassau County*

CORINNE HAMMONS, TREASURER

*Chief Executive Officer
Little Flower Children and Family Services of NY*

JEFFREY WEIR, SECRETARY

*Senior Vice President
Rubenstein*

THOMAS MALIGNO, ESQ., COUNSEL

*Executive Director
Touro Public Advocacy Center*

REBECCA SANIN

*President/Chief Executive Officer
Health & Welfare Council of Long Island*

BOB DETOR, IMMEDIATE PAST BOARD CHAIR

*Retired President/Chief Executive Officer
LI Home/South Oaks Hospital*

DAVID A. BISHOP

*Partner
Kirby McInerney LLP*

SAMUEL CHU

*Chief Innovation Officer
Edgewise Energy*

PETER A. EGAN

*Partner
Nixon Peabody LLP*

MELISSA SIDOR

*General Counsel/Compliance Director
Timothy Hill Children's Ranch, Inc.*

MICHAEL STOLTZ

*Chief Executive Officer
Association for Mental Health & Wellness*

Meet Our New Board Chair!

Throughout his distinguished career, David Nemiroff has been instrumental in efforts to shape public policy to support people with mental illness and autism in the ever-changing world of health and human services delivery. His experience, wisdom, and understanding of Long Island uniquely position him to take the helm of HWCLI's board of directors.

For almost five years, David has been the President and CEO of the Long Island Federally Qualified Health Centers (LIFQHC). LIFQHC, Inc. provides over 132,000 medical and support visits to more than 33,000 patients per year in multiple sites across Nassau County. Before joining LIFQHC, David led the Nassau Queens Performing Providers System, working with over 8,000 partners to transform the health care of almost half a million Long Islanders. He also served as Executive Director of the Mental Health Association of Nassau County, Inc.

David began his career in health and human services with Catholic Charities and Family Residences and Essential Enterprises, Inc. (FREE), supervising case management programs for individuals with traumatic brain injury and intellectual disabilities. Mr. Nemiroff completed his 14-year career with FREE as its Chief Support Services Officer.

Early in his career, David worked as a staff psychotherapist for the United Cerebral Palsy Association of Suffolk County, Inc. and as a Certified Field Instructor for both Social Work and Mental Health Counseling students.

David serves on the Board of Directors for Community Advocates and Homes Anew I & II. He is a member of the Long Island Health Collaborative and the Board of Managers for Community Health Centers IPA. David is on the advisory Board for the MPH Program at Hofstra University.

HWCLI is excited to move ahead under David Nemiroff's leadership.

Did You Know? **84%** of the HWCLI Board hold **ADVANCED DEGREES**



MEET OUR TEAM



REBECCA SANIN
President/Chief Executive Officer



LORI ANDRADE
Chief Operations Officer



CELESTE HERNANDEZ
Human Services Manager



EMILY ROGAN
Project Manager, CBO Planning Grant



SUZANNE RANAUDO
Fiscal Administrator



TOMMI-GRACE MELITO
Economic Stability Program Manager



MARIA CARVAJAL
Nassau Nutrition Outreach & Education Coordinator



STEPHANIE D'HAITI
Outreach & Engagement Coordinator



GINA DORSO
Communications & Event Coordinator



CAROLINA FLORES CRUZ
Client Services Specialist



MARY HALLOWELL
Office Affairs & Special Projects Manager



FATIMA LASSO
Suffolk Nutrition Outreach & Education Coordinator



JOHN LOPES
Project Assistant, CBO Planning Grant



DONNA VARGAS
Outreach Specialist

Did You Know? **64%** of our staff is **BILINGUAL** & **50%** hold **ADVANCED DEGREES**



OUR NETWORK OF NONPROFITS

Abilities Inc. at The Viscardi Center
 Adelante of Suffolk County, Inc.*
 Adopt a House (Lindenhurst COAD)
 AHRC
 Alliance for Quality Education of New York
 Alpern Family Foundation, Inc.
 Alternatives, Inc.
 Alzheimer's Association Long Island*
 American Diabetes Association*
 American Red Cross on Long Island*
 Amoachi & Johnson PLLC
 Association for Mental Health & Wellness*
 Asthma Coalition of Long Island
 Catholic Charities – Disaster Action Response Team (DART)
 Catholic Charities Community Services, Archdiocese of New York
 Catholic Charities of the Diocese of Rockville Centre*
 Catholic Health Services of Long Island
 Cenacle Sisters Ronkonkoma
 Central American Refugee Center (CARECEN-NY)
 Central Nassau Guidance & Counseling Services
 Centro Corazon de Maria Inc.*
 Cerini & Associates, LLP*
 Chadbourne & Park, LLP
 Child Care Council of Nassau, Inc.*
 Child Care Council of Suffolk, Inc.*
 Children's Rights
 Choice for All*
 Christ Episcopal Church
 Circulo de la Hispanidad
 Colonial Youth & Family Services
 Community Action Southold Town (CAST)
 Community Development Corporation of Long Island
 Community Legal Advocates of New York
 Community Program Centers of Long Island, Inc.*
 Community Voices for Youth and Families
 Concern for Independent Living, Inc.
 Congregation of the Infant Jesus
 Daughters of Wisdom
 Docs for Tots*
 Dominican Sisters of Amityville
 EAC Network*
 Economic Opportunity Commission of Nassau County, Inc.
 Economic Opportunity Council of Suffolk, Inc.*
 Empire Justice Center*
 Empowerment Collaborative of Long Island*
 Energeia Partnership
 EPIC Long Island*
 Episcopal Ministries of Long Island*
 Family & Children's Association*
 Family Residences and Essential Enterprises, Inc. (FREE)*
 Family Service League*
 Federal Emergency Management Agency (FEMA)
 Fordham University School of Law
 Friends of Freeport NY (COAD)
 Friends of Long Island (COAD)
 Friends of Shirley and the Mastics (COAD)
 Greater Patchogue COAD
 Harbor Child Care
 Healthfirst
 HELP Suffolk
 Hispanic Brotherhood Inc.
 Hispanic Counseling Center*
 Hispanic Federation

Hope Floats Long Island, Inc.
 Hope for Youth
 Housing Help, Inc.*
 Human Rights First
 Immigrant Justice Corps
 Incorporated Village of Mastic Beach
 Interfaith Nutrition Network*
 Island Harvest
 Island Public Affairs
 L.I. Against Domestic Violence (LIADV)*
 Latino Justice PRLDEF
 Legal Aid Society of Nassau County, Inc.
 Legal Aid Society of Suffolk County, Inc.
 LGBT Network
 Lindy Manpower (Lindenhurst COAD)
 Little Flower Children and Family Services of New York*
 Local 1102 RWDSU/UFCW*
 Long Beach COAD*
 Long Island Adolescent and Family Services (LIAFS)*
 Long Island Advocacy Center*
 Long Island Cares Inc. – Harry Chapin Food Bank*
 Long Island Children's Museum (LICM)
 Long Island Civic Engagement Table (LICET)
 Long Island Community Foundation (LICF)
 Long Island Council of Churches
 Long Island Council on Alcoholism and Drug Dependence (LICADD)
 Long Island Episcopal Cursillo
 Long Island FQHC, Inc.*
 Long Island Housing Partnership (LIHP)
 Long Island Housing Services, Inc.*
 Long Island Immigrant Students Advocates
 Long Island Jobs with Justice
 Long Island Minority AIDS Coalition Inc. (LIMAC)
 Long Island Network of Community Services, Inc. (LINCS)
 Long Island Volunteer Center*
 Lupus Alliance of LIQ
 Lutheran Counseling Center
 Make the Road New York
 Maureen's Haven*
 Mental Health Association of Nassau County (MHA)*
 MercyFirst*
 Middle Country Library Foundation*
 Missionary Sisters of St. Benedict
 Mutual of America*
 Nassau Community College
 Nassau County Office of Emergency Management (OEM)
 Nassau County Storm Recovery
 Nassau Suffolk Law Services Committee, Inc.*
 Nassau-Suffolk Hospital Council, Inc.*
 National Black Leadership Commission on AIDS (NBLCA)
 National Center for Suburban Studies at Hofstra University*
 National Conference of Vicars for Religious (NCVR) – Brooklyn
 National Conference of Vicars for Religious (NCVR) – Rockville Centre
 Neighbors In Support of Immigrants (NISI)
 Neighbors Supporting Neighbors (Babylon COAD)
 New York Civil Liberties Union (NYCLU)
 New York Committee for Occupational Safety & Health (NYCOSH)
 New York Communities for Change (NYCC)
 New York Immigration Coalition (NYIC)
 Nixon Peabody, LLP
 North Shore Child & Family Guidance Center
 North Shore Counseling Group

Northwell Health*
 NuHealth
 NY Rising Community Reconstruction Program
 NYS Department of Labor
 NYS Division of Homeland Security & Emergency Services
 Oceanside ACTION (COAD)
 Opportunities Industrialization Center of Suffolk, Inc.
 Options for Community Living, Inc.*
 Pal-O-Mine Equestrian*
 Pan American Administrative Service
 Peace Valley Haven, Inc.
 Pet Safe Coalition – Nassau County SPCA
 Planned Parenthood Hudson Peconic, Inc.*
 Planned Parenthood of Nassau County, Inc.*
 PSEG Foundation
 PSEG Long Island
 Rebuilding Together Long Island
 Roosevelt Community Revitalization Group (COAD)
 Rural & Migrant Ministry
 Safe Passage Project
 Salvation Army of Greater New York
 Sandy Support, Massapequa Style (COAD)
 SCO Family of Services*
 Setauket Presbyterian Church
 Sisters of Charity Halifax
 Sisters of St. Joseph
 Sisters of the Good Shepherd
 Skills Unlimited, Inc.
 Society of St. Vincent de Paul*
 South Shore Child Guidance Center – EPIC Long Island
 Sterling National Bank*
 Suffolk County Office of Emergency Management (OEM)
 Suffolk County SPCA
 Suffolk Perinatal Coalition
 Suffolk Y Jewish Community Center (SYJCC)
 Team Rubicon
 Terry Farrell Firefighters Fund
 The 11518, Inc. (East Rockaway COAD)
 The City of Long Beach Building Department
 The Door
 The Elevated Studio
 The Long Island Home
 The Maurice A. Dean School of Law at Hofstra University
 The New York Conference/The United Methodist Church NYAC
 The Port Washington Crisis Relief Team (COAD)
 The Retreat, Inc.
 The Safe Center LI*
 Touro Law Center Disaster Relief Clinic
 Town of Islip Office of Emergency Management (OEM)
 Transitional Services of NY for Long Island, Inc.*
 U.S. Green Building Council – LI Chapter (USGBC)*
 Unitarian Universalist Congregation at Shelter Rock
 Unitarian Universalist Fellowship of Huntington
 United Methodist Church Disaster Response
 United Way of Long Island
 Ursuline Sisters of Tildonk
 Variety Child Learning Center
 Victims Information Bureau of Suffolk (VIBS)
 Visiting Nurse Services of New York
 WellLife Network
 Wyandanch Homes & Property Development Corporation (WHPDC)
 Youth Enrichment Services (YES)*

"Whether the issue is poverty, food insecurity and hunger, the rights of immigrants, or advocating for sound and intelligent social policies, we rely upon our strong and collaborative relationship with the Health and Welfare Council of Long Island to achieve much of our mission. They are great partners with the regional food bank, and we value the work we do together."

-Paule Pachter, CEO, Long Island Cares

"HWCLI continues to be the go-to organization when nonprofits, big and small, need to come together to address an emerging need in the community or work differently with government."

-Jeffrey Reynolds, CEO, Family & Children's Association

"During this time of uncertainty and fear in the Latino community on Long Island, HWCLI's leadership and commitment to all of our Long Island neighbors has been unwavering and necessary. I applaud HWCLI in bringing critical conversations on race, ethnicity and equity to the non-profit community."

-Gladys Serrano, CEO, Hispanic Counseling Center

"It is refreshing and so timely to have a support network, like Health and Welfare Council of Long Island, help nonprofits, like Choice for All, continue to elevate our work on the ground in advancing health equity on Long Island. To have an anchor who is able to advocate on policies and provide capacity building on issues that are unique to our region's dynamic is vital and necessary."

-Jacob Dixon, CEO, Choice For All

*Organizations who contributed financially to HWCLI in 2018



CHALLENGES OF SUBURBAN POVERTY

Long Island was built as America's first suburb, envisioned as a land of opportunity, accessibility, and upward mobility for an expanding middle class. HWCLI is committed to ensuring that this dream is available to all of our neighbors, across every zip code and every town.

Ours is often perceived as an affluent region. However, studies show that poverty here is a complex, nuanced issue affecting more of our neighbors than meets the eye.

1 in 3 households

CANNOT MEET THE BASIC NEEDS BUDGET



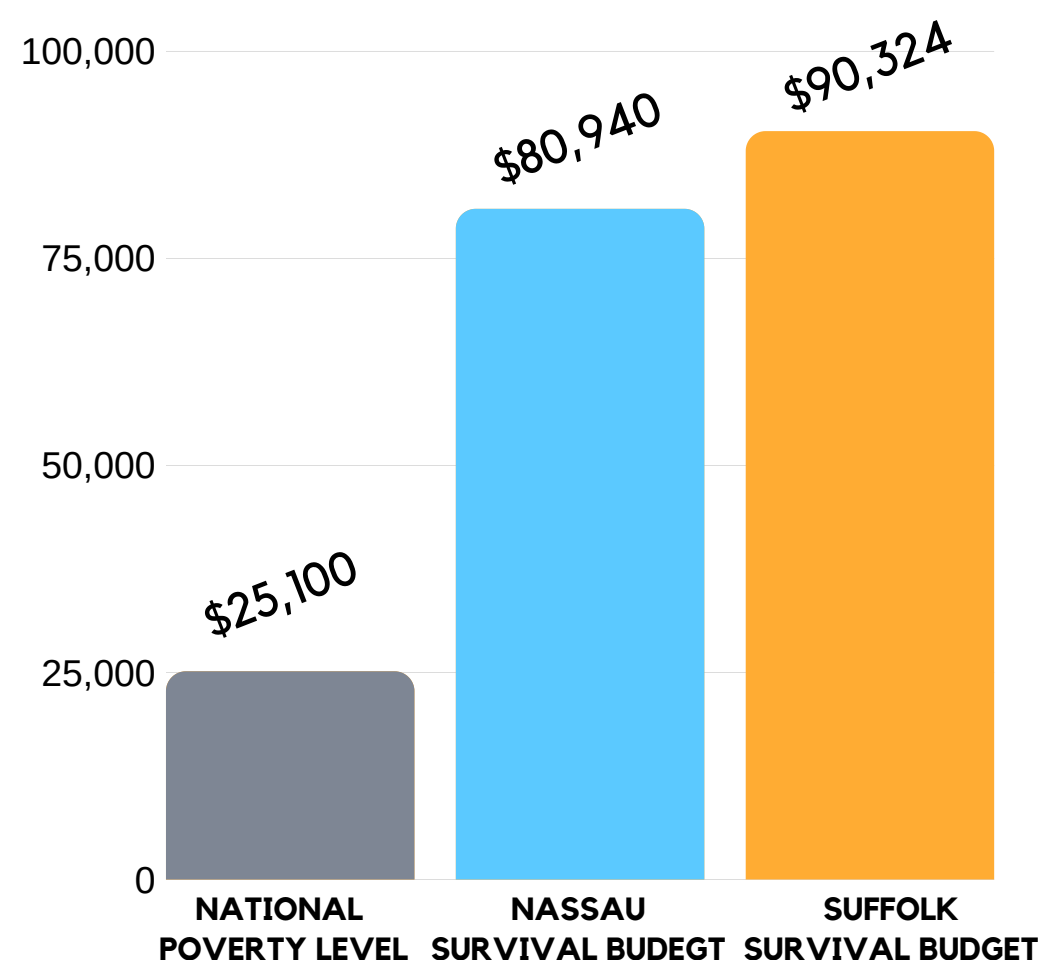
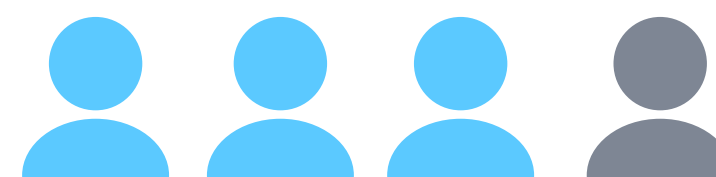
(Basic Needs Budget)

CHILD CARE + RENT & UTILITIES + FOOD +
TRANSPORTATION + HEALTH CARE + OTHER
NECESSITIES + PAYROLL & INCOME TAXES

The poverty rate on Long Island is the highest it has been in more than 50 years, with approximately 197,000 people living below the national poverty line – but even this staggering statistic does not tell the whole story. There are nearly 268,000 additional households on Long Island with incomes above the national poverty level that fall below the budget calculated to account for basic needs here.

1 in 4 adults

HAS FACED NUTRITIONAL INSECURITY IN THE PAST YEAR



OUR APPROACH

At HWCLI, we operate a series of programs that address the day-to-day symptoms of poverty including nutritional security, access to healthcare, affordable health insurance, and economic security. Together with our network of nonprofits, we provide a unique, crucial safety net for our neighbors who fall into an under-recognized category of suburban poverty – those who earn too much to qualify for federal assistance programs, but not enough to sustain the high cost of living on Long Island. If not for us, their needs might go unmet.

Simultaneously, we engage with local, state, and federal government to advocate for strong policy agendas that improve existing systems. We partner with agencies across the island to unite our region's nonprofit community because we understand that together, our sector is more resilient and our voices, more powerful. We believe grassroots community engagement is essential.

Our direct service programs inform our policy, advocacy, and convening work and vice versa. Each branch of our work is strengthened by the insights and understanding provided by the others.

We work with local, state, and federal government partners to advocate for effective policy decisions that will impact our neighbors and hometowns.

POLICY & ADVOCACY

COALITION BUILDING & GRASS ROOTS ORGANIZING

DIRECT SERVICES

We bring together nonprofits, business leaders, and lawmakers to discuss solutions to our region's challenges.

We operate a series of programs that connect Long Islanders with the services they need.



CHALLENGES OF SUBURBAN POVERTY

Long Island was built as America's first suburb, envisioned as a land of opportunity, accessibility, and upward mobility for an expanding middle class. HWCLI is committed to ensuring that this dream is available to all of our neighbors, across every zip code and every town.

Ours is often perceived as an affluent region. However, studies show that poverty here is a complex, nuanced issue affecting more of our neighbors than meets the eye.

1 in 3 households

CANNOT MEET THE BASIC NEEDS BUDGET



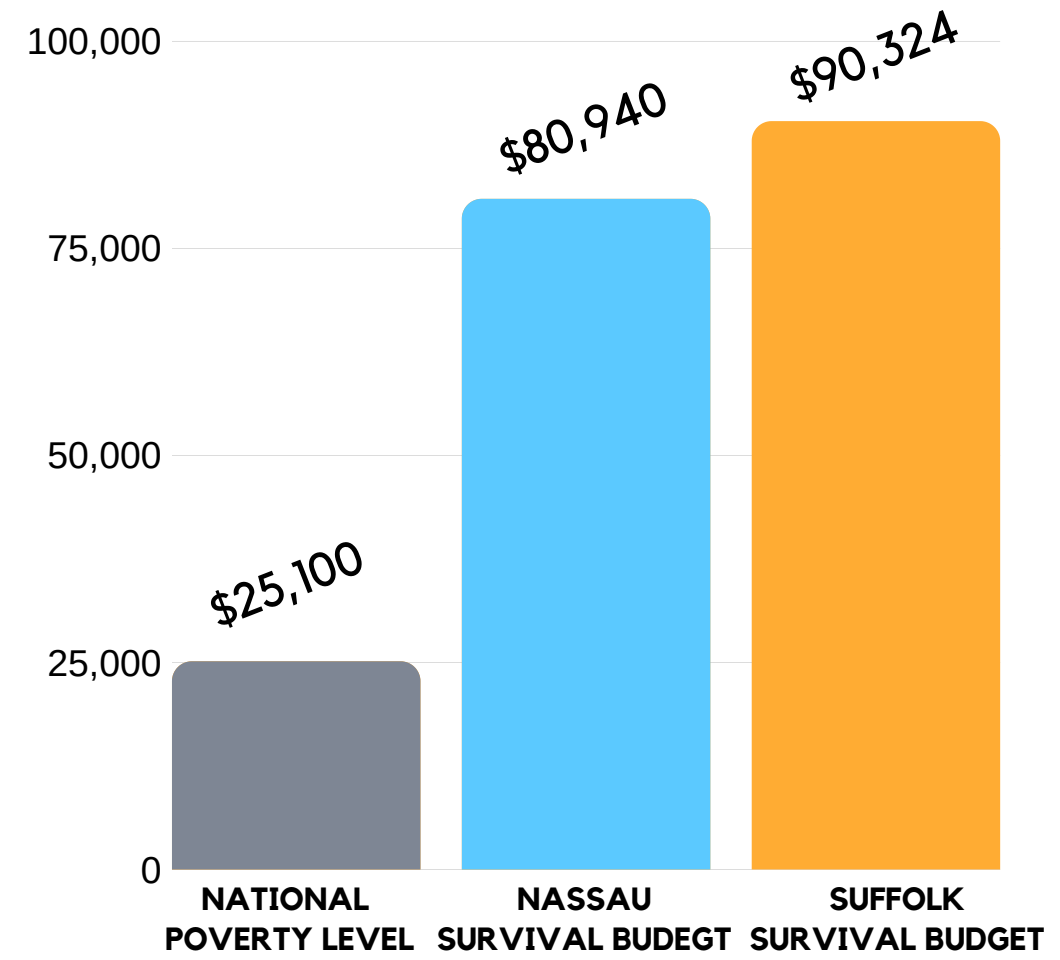
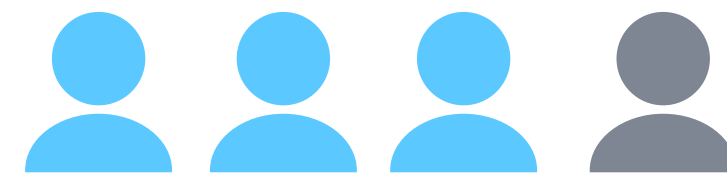
(Basic Needs Budget)

CHILD CARE + RENT & UTILITIES + FOOD +
TRANSPORTATION + HEALTH CARE + OTHER
NECESSITIES + PAYROLL & INCOME TAXES

The poverty rate on Long Island is the highest it has been in more than 50 years, with approximately 197,000 people living below the national poverty line – but even this staggering statistic does not tell the whole story. There are nearly 268,000 additional households on Long Island with incomes above the national poverty level that fall below the budget calculated to account for basic needs here.

1 in 4 adults

HAS FACED NUTRITIONAL INSECURITY IN THE PAST YEAR



OUR APPROACH

At HWCLI, we operate a series of programs that address the day-to-day symptoms of poverty including nutritional security, access to healthcare, affordable health insurance, and economic security. Together with our network of nonprofits, we provide a unique, crucial safety net for our neighbors who fall into an under-recognized category of suburban poverty – those who earn too much to qualify for federal assistance programs, but not enough to sustain the high cost of living on Long Island. If not for us, their needs might go unmet.

Simultaneously, we engage with local, state, and federal government to advocate for strong policy agendas that improve existing systems. We partner with agencies across the island to unite our region's nonprofit community because we understand that together, our sector is more resilient and our voices, more powerful. We believe grassroots community engagement is essential.

Our direct service programs inform our policy, advocacy, and convening work and vice versa. Each branch of our work is strengthened by the insights and understanding provided by the others.

We work with local, state, and federal government partners to advocate for effective policy decisions that will impact our neighbors and hometowns.

POLICY &
ADVOCACY

COALITION
BUILDING &
GRASS ROOTS
ORGANIZING

DIRECT
SERVICES

We bring together nonprofits, business leaders, and lawmakers to discuss solutions to our region's challenges.

We operate a series of programs that connect Long Islanders with the services they need.

OUR PROGRAMS & INITIATIVES

HEALTH INITIATIVES

We are committed to the belief that everyone should have access to quality, affordable healthcare.

NYS Health Insurance Marketplace Navigation

HWCLI enrolls Long Islanders in the New York State Health Insurance Marketplace by helping our clients find the plan that best fits their medical and financial needs.

Last year, we enrolled over **1,300** INDIVIDUALS IN HEALTH INSURANCE

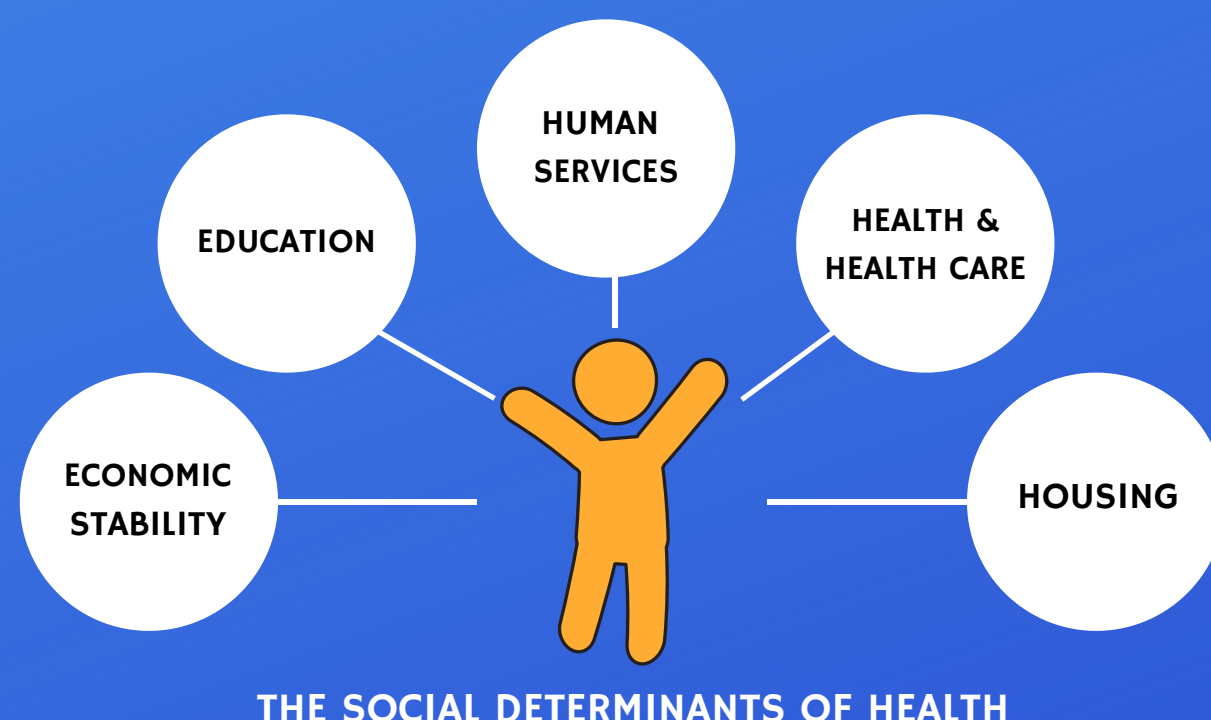
Community Health Advocacy (CHA)

As a Community Health Advocacy (CHA) agency, HWCLI helps Long Islanders maximize their health insurance by finding doctors that accept their plans and assisting clients as they navigate the complex billing and claims process. We also help those who do not qualify for health insurance find affordable and high-quality care through the Long Island Federally Qualified Health Centers.

Last year, we assisted over **600** INDIVIDUALS IN ACCESSING CARE

Health Equity Alliance of Long Island (HEALI)

This year, HWCLI established the Health Equity Alliance of Long Island (HEALI), a groundbreaking coalition of nonprofits specifically focused on combatting disparities in health outcomes in our communities. We brought together 80 community based organizations from across our region, all of whom serve what are known as the "Social Determinants of Health" – how people live, work, eat, play, and pray. Together these partners are working to create sector-wide service delivery, person-centric care coordination, and create a technological infrastructure to connect agencies with each other and with partners such as healthcare systems, funders, and government.



NUTRITIONAL SECURITY

No one should have to choose between paying the rent and feeding their family.

Supplemental Nutrition Assistance Program (SNAP) Enrollment

SNAP provides nutrition assistance to eligible low-income individuals and families. In addition to increasing individuals' and families' access to healthy foods, the program provides between \$1.73 and \$1.79 of investment in local economic activity for every SNAP dollar spent in the community- a stimulus for small businesses. HWCLI connects Long Islanders with SNAP benefits by assisting with application and enrollment and providing necessary education and outreach through community events at the grassroots level.

Last year, we assisted over **4,000** INDIVIDUALS IN ACCESSING SNAP

Women, Infants & Children (WIC) Coordination

The Women, Infants, and Children (WIC) Food Security Program connects new mothers and their young children with nutritional assistance during the critical early years of a child's life. This year, HWCLI partnered with Long Island's five WIC providers and nearly 30 WIC clinics, as well as the Federally Qualified Health Center clinics in which they operate, to create streamlined referral services, replicate best practices, and integrate resource systems where clients have access to all of the services they may need. HWCLI is proud to work with and advance the interests of the WIC community on Long Island.



OUR PROGRAMS & INITIATIVES

ECONOMIC STABILITY

Economic stability influences and is influenced by every aspect of a person's life. HWCLI takes a holistic approach to helping people find a path to self-sufficiency and prosperity.

Virtual Volunteer Income Tax Assistance (VITA)

Virtual VITA is a way for people who make less than \$55,000 a year to have their taxes prepared completely free of charge by an IRS certified preparer. In 2018, HWCLI had its most successful VITA season yet, exceeding expectations with nearly 400 returns filed. Our sites spanned the Island, from Greenport to Hempstead, where we partnered with local governments and trusted community organizations such as libraries and community resource centers to provide this vital service.

Free tax preparation may seem like a minor service, but in reality, it is an understated form of social justice. All too often, predatory lending companies offer high interest loans for the expected amount of a tax return, charge exorbitant rates for tax preparation, and sometimes don't even file a client's taxes. The Virtual VITA allows our Long Island families to enjoy the full benefit of their hard work, by ensuring that they can get connected to their refund for free. This project is supported by Citi Community Development.

<p>HWCLI assisted</p> <p>363</p> <p>CLIENTS IN 2018 242% INCREASE FROM 2017</p>	<p>Our clients collectively received over</p> <p>\$400,000</p> <p>IN TAX REFUNDS</p>	<p>& saved over</p> <p>\$200,000</p> <p>IN PREPARATION FEES</p>
--	---	--

Long Island Voluntary Organizations Active in Disaster (LIVOAD) & Unmet Needs Roundtable (UNR)

The Long Island Voluntary Organizations Active in Disaster (LIVOAD) is a coalition of nonprofits and government agencies working together in the areas of disaster mitigation, preparedness, response, and recovery. In 2018, HWCLI brought together the LIVOAD organizations with regular meetings to bolster our region's preparedness for the next natural or manmade disaster. The LIVOAD's membership expanded in 2018, now encompassing 153 organizations island-wide.

This year, together with American Red Cross and the Long Island Housing Partnership, HWCLI integrated our disaster program with our economic stability and health and human services programs by developing a Housing Safety and Security Campaign. This campaign identifies outreach strategies to engage communities on Long Island, oversees an event calendar for housing workshops, and established an ongoing Housing Safety and Security resource guide.

This year, the Unmet Needs Roundtable administered by HWCLI exhausted all available funds for families affected by Superstorm Sandy. Since 2012, six million dollars was administered in grants to help families impacted by Sandy reach recovery.

IMMIGRATION SUPPORT

Central American Children's Defense Project

Today in America, immigrants are bombarded by the unpredictable changes in administrative policy and a daily onslaught of negative rhetoric. This is a critical time for immigrant children to have access to legal representation and safe, trusted health and human services. While immigrants of all ages and status are feeling the pressure and stress, young children are especially susceptible and in need of advocacy. Since October 2013, more than 9,000 unaccompanied children have come to Nassau and Suffolk Counties. They need a legal, school and human service network that is coordinated and collaborative in its communications, service delivery, and advocacy.

HWCLI's Long Island Immigrant Children Defense Project addresses the immediate and dire needs of recently arrived children from Central America by convening legal partners, school districts, and our network of health and human service agencies around the children's needs to coordinate a unified system of service delivery. In addition, HWCLI provides training opportunities for health and human service staff in the field so that they are prepared to meet the specific needs of traumatized children. As school districts adapt to an ever-changing student population, HWCLI helps to ensure that children are safe, protected, and have equitable opportunities.

Census 2020 Advocacy

The Census counts every person once and in the right place every ten years. This Census data is crucial; it's used to determine the number of seats in the House of Representatives, electoral votes, and when to redistrict. It's also used to allocate federal assistance to state and local governments, fuel the economy, and identify the need for and location of community services.

There are significant challenges and barriers to an accurate Census count, including an increasingly mobile population, constrained fiscal environment, rapidly changing technology, distrust in government, declining response rates, increasingly diverse population, and informal complex living arrangements. The inclusion of a citizenship question will greatly increase the barriers to a complete count.

History proves the best way to overcome these barriers is to form a Complete Count Committee- a local, grassroots coalition of government, nonprofit partners and community leaders that work with and represent the hardest to reach communities. HWCLI was part of Long Island's complete count work for the 2000 and 2010 Census Counts. We remain committed to this work as we increase awareness about the 2020 Census and motivate people and communities to fill in their forms and be counted.



EVENTS & MEETINGS

Winter Quarterly Meeting: State of the State with Kathy Hochul

January 10th, 2018

Lieutenant Governor Kathy Hochul provided an overview of the current state of affairs on Long Island and the importance of partnership between government and nonprofits working together on issues impacting Long Island's at-risk residents including seniors, children, people with disabilities, veterans and working families. At a time when policies and budget cuts from Washington are straining services and programs, growing numbers of Long Islanders are having trouble making ends meet and relying on health and human service agencies and government for critical services and supports.



Spring Quarterly Meeting: Health Equity Forum

March 27th, 2018

Our distinguished panelists included Sinsi Hernandez-Cancio, Director of Health Equity for Families USA, Elisabeth Benjamin, Vice President of Health Initiatives for the Community Service Society and Jacob Dixon, Founder and CEO for Choice For All, a Roosevelt-based community organization. Our speakers shared data and models that made the case for creating systems and pipelines for services that are equitable and sustainable, ultimately improving people's health outcomes in all communities on Long Island.



Summer Quarterly Meeting: Suffolk County Sheriff Errol Toulon, Jr.

June 21st, 2018

Suffolk County Sheriff Errol Toulon, Jr. discussed initiatives to reduce recidivism, strengthen community connections, and create positive outcomes for the youth of Suffolk County. Our network of nonprofits engaged in an open dialogue about the potential for more just outcomes for our citizens strategies to support individuals with mental illness.





EVENTS & MEETINGS

2018 Annual Meeting: A Panel on Hate & Bias

September 27th, 2018

Our panel consisted of: the New York State Commissioner of Human Rights, Helen Diane Foster, Dean of Touro Law College, Harry Ballan, Superintendent of Hampton Bays School District, Lars Clemensen, Assistant Commissioner for Community Engagement for the Nassau County Police Department, Marianela Casas, and Long Island Regional Director for the NAACP, Tracey Edwards. Panelists discussed the moral charge of calling out hateful language, knowing your neighbors, moving towards incremental change and understanding that expanding opportunity benefits us all.



Roundtable on Regional Opioid & Mental Health Issues: Tish James

October 9th, 2018

We hosted a roundtable with then-Attorney-General-candidate, Tish James to discuss the opportunity of the Attorney General's office to address the opioid crisis and serious parity and access issues relative to mental health services in our region. Nonprofit executives, senior leadership at Northwell, school district leadership, critical funding partners, as well as Suffolk County Sheriff Errol Toulon, Assemblywoman Kimberly Jean-Pierre, Senator John Brooks and then-Legislator Monica Martinez all came together to engage in a robust conversation on these complex issues.



Superstorm Sandy: Lessons Learned & Forging Policy for the Future

November 15, 2018

HWCLI and Touro Law Center co-hosted this all-day conference, which examined our united response to Sandy, from early preparations to the still lingering effects of the storm's destruction today. Participants discussed how the multi-layered cooperation of our region made the difficult recovery more effective. Representatives from all levels of government and many community groups highlighted what enabled our success and how future responses could be even more robust. We heard from keynote speakers: Jack Schnirman, Nassau County Comptroller and former Long Beach City Manager, Senator Joe Addabbo, Jr, and the Director of the Federal Emergency Management Agency Office of the Flood Advocate, and David Stearrett, as well as expert panelists who shared their experiences and insights and made recommendations for the future.





HALLOWEEN BALL 2018

On October 24th, 2018, the Health & Welfare Council of Long Island held our Second Annual Halloween Ball at Oheka Castle. The event drew over 200 leaders in business, government, nonprofits and higher education. Proceeds went to supporting HWCLI's work in advocating for our region. HWCLI honored three incredible high school students. We believe their words from that evening speak for themselves.

Sari Avila-Franklin, 2018 Steward of Social Justice

"Nothing makes me happier than when a mom or a dad or even a grandparent that I've taught returns to tell me that they passed their naturalization exam, are now a US Citizen and what this means for their family. As the daughter of two immigrant parents, this is what moves me most. I hope that by doing the work I do in our community that I inspire others to know that they are powerful and can help people who are struggling."



Ilsi Martinez Euceda, 2018 Steward of Social Justice

"Just four years ago, I didn't know any English and now I'm here making this speech and I'm planning to go to college! I want to help other students draw a map in their memory about where to go and where to start. I tell them that Huntington High is the perfect place to begin. I do not teach them, I guide them, the same way I was guided."

Glorianna Jackson, 2018 Steward of Social Justice

"I'd like to encourage you to all take the opportunity to make the difference in your community. Know that you have a voice and that it is powerful and can be used for good. So please use it because unfortunately, some people can't. So do it for them. Go out and vote. Raise money for a cause you are passionate about. Find a way to be the change you want to see in the world. If you don't, who will?"





OUR SUPPORTERS

FUNDERS

Bank of America	Long Island Community Foundation	Newsday Charities, a McCormick Foundation Fund
Bridgehampton National Bank	Manhasset Greentree Good Neighbor Fund	Pritchard Charitable Trust
Capital One	New York Community Bank Foundation	PSEG Foundation
Citi Community Development	New York Community Trust	PSEG LI
The Charlotte Cheatham Hunger Relief Fund	New York State Department of Health	Public Health Solutions
Community Service Society New York	New York State Health Foundation	Robin Hood Foundation
Hunger Solutions NY	Northwell Health	Sandy River Charitable Foundation
Long Island Funder's Collaborative	NYS Office of Temporary and Disability Assistance	United Way of Long Island

HALLOWEEN BALL SPONSORS

Patron of HWCLI Sponsors

People's Untied Bank

Friend of HWCLI Sponsors

AM Fund
 Bella Luz Creations
 CGAA, Inc.
 Edgewise Energy
 Ferro, Kuba, Mangano, Skyler PC
 Hercules Pharmaceuticals
 Minute Man Melville
 Madison Square Garden
 Northwell Health
 Rubenstein
 Rubies Costume Company
 Suffolk Transportation, Inc.

Table Sponsors

Bethpage Federal Credit Union
 EOC of Suffolk
 Long Island FQHC, Inc.
 Nina Cohen
 Palacios Law Group
 PSEG
 Sean Ryan
 Tom Maligno
 United Health Care
 US Fund for Unicef

HALLOWEEN BALL & OTHER CONTRIBUTORS

Afflack	Fidelis	Marlene Zamari
Ajlouny & Associates	Gabriela Castillo	Martine Hackett
Aleen Hosdaghian	GID Construction	Mary Anne Scott
Andrea Boccafola	Hagit Bodner	Mary Jackson
Arther Tirmizi	Health First	Matthew Geoghegan
Ayesha Allen	Hispanic Counseling Center	Mental Health Association of Nassau County
Barbara & Chris Cagnazzi	Jairo Sanin	Meredith Spector
Barbara Larkin	Jane Schulman	Michele Baltus
Bedel Saget	Joaniko Kohchi	Miriam Forman
Beth Weiss	Joe Slaninka	Miriam Diestch
Bob Detor	Johanna Smith	Nassau Suffolk Hospital Council
Bobby Selya	John & Meg Hallowell	National Center for Suburban Studies at Hofstra University
Brenden Cusack	Jon Schneider	National EAP
Brooklyn Boulevard	Jose Avila	New York Immigration Coalition
Cambridge Leadership	Jose Vasquez	Palacio's Law Group
CARR, Inc.	K Bell Associates	Paul Arfin
Child Care Council of Nassau	Kate Calone	Phil Ryan
Circulo de Hispanidad	Kathleen Williams	Planned Parenthood of Nassau County
CMIT Solutions	Kayla Erb	Rosario Lorenzana
COPAY, Inc.	Kevin Foley	Samantha Berry
Cresa	Kramer & Pollack, LLP	Sara Amani
Cynthia Scott	Laurie Hoey	Shannon Boyle
David Bishop	Lawrence Silverman	Soroptomist of Suffolk County
David Nemiroff	Lester Scheinfeld	Suffolk Federal Credit Union
Deb Ceglia	L.I. Against Domestic Violence	T.D. Bank
Diana Bonilla	Lisa Tyson	Tami Stark
Diana O'Neill	LIBC	The LIAC
Eagle Planning Group	Little Flower Children & Family Services of	The Viscardi Center
Eleanor Larson	New York	Thomas Melito
Ellen Vollinger	Long Island FQHC	Thomas Mullholland
Erin Murphy Naccarato	Lynn Kaufman	Timothy Hill Ranch
Errol Toulon, Jr.	Marc Perez	Vanguard Insurance
Family & Children's Association	Margolin, Winer & Evens, LLP	Will Ferro
Family Residences & Essential Enterprises	Marge Rogatz	William Spencer
	Marita Mullholland	Youth Enrichment Services



FINANCIALS

STATEMENT OF FINANCIAL POSITION

2017

ASSETS	Current	1,286,018
	Non Current	19,005
	Total Assests	<u>1,305,023</u>
LIABILITIES & NET ASSETS	Liabilities- Current	155,545
	Net Assets	1,149,478
	Total Liabilities & Net Assests	<u>1,305,023</u>

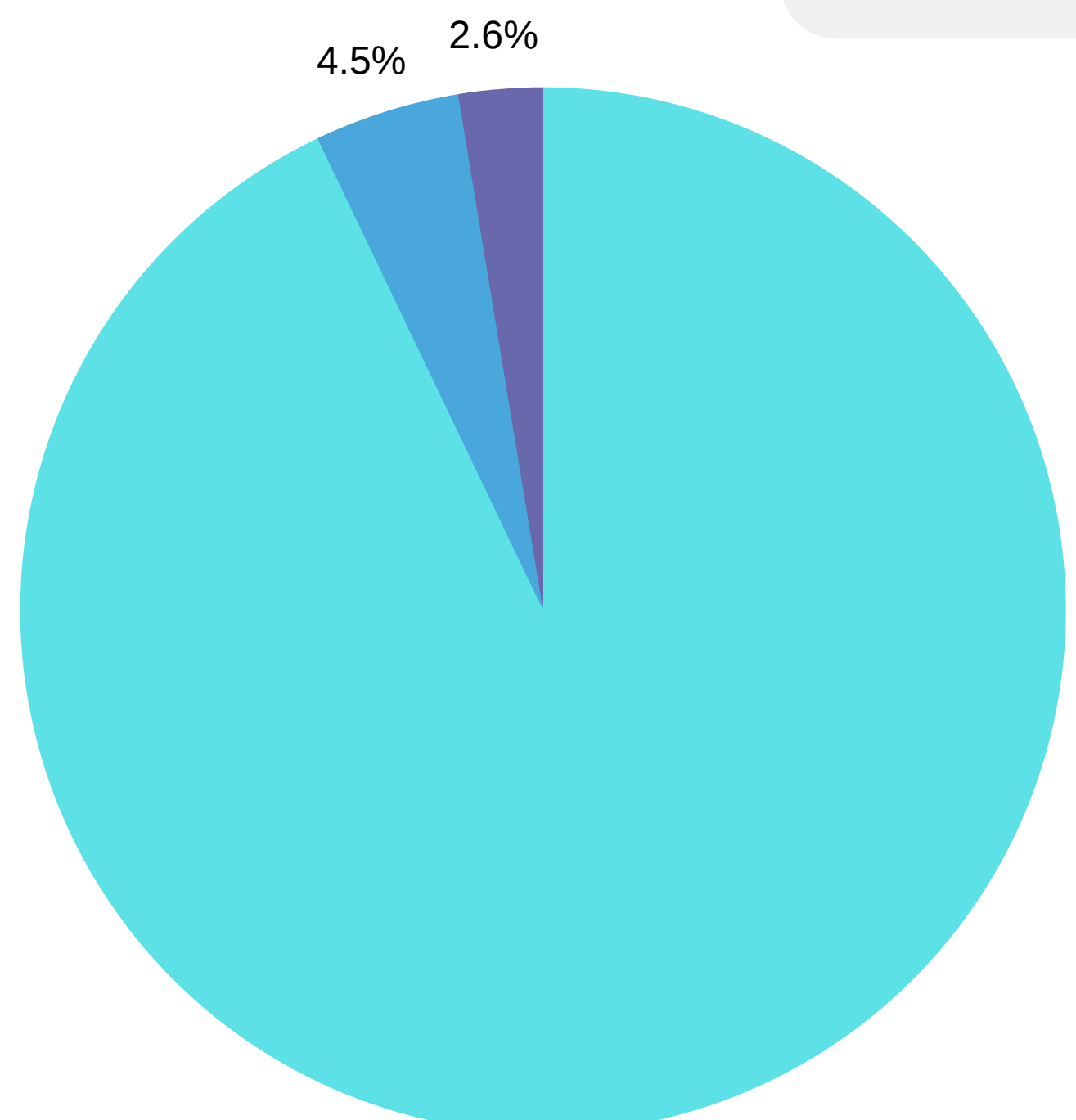
STATEMENT OF ACTIVITIES

2017

SUPPORT & REVENUE	Total Support & Revenue	<u>1,674,842</u>
EXPENSES	Personnel & Fringe	9,44,367
	Non Personnel	1,025,461
	Total Expenses	<u>1,969,828</u>
CHANGE IN NET ASSETS	Decrease in Net Assets	(294,986)*
	Net Assets- 1/1/17	1,444,464
	Net Assests- 12/31/17	<u>1,149,478</u>
FUNCTIONAL EXPENSES	Program Services	1,830,838
	Management & General	88,496
	Fundraising	50,494
	Total Expenses	<u>1,969,828</u>

* Note: The decrease in net assets is primarily due to the distribution of funds relating to the UNMET Needs Roundtable. HWCLI is responsible for disbursing UNMET Needs Roundtable grants to Long Island's most vulnerable individuals and families that were impacted by Superstorm Sandy.

■ PROGRAM SERVICES	92.9%
■ ADMINISTRATION	4.5%
■ FUNDRAISING	2.6%



Established in 1947, the Health and Welfare Council of Long Island (HWCLI) is a regional, nonprofit umbrella organization for health and human service providers. We are dedicated to improving the lives of Long Island's most vulnerable residents by responding to their needs through the promotion and development of public policies and direct services.

HWCLI serves the interests of poor and vulnerable people on Long Island by convening, representing, and supporting the organizations that serve them; and through:

- Illuminating the issues that critically impact them
- Organizing community and regional responses to their needs
- Advocacy, research, and policy analysis
- Providing services, information and education.



WE CELEBRATE THE YEAR'S ACCOMPLISHMENTS AND
KNOW THERE CONTINUES TO BE MUCH WORK AHEAD TO
ACHIEVE AN EQUITABLE LONG ISLAND.

JOIN US.



CONTACT US TO LEARN MORE:
CONNECT@HWCLI.COM

HWCLI

Health & Welfare Council of Long Island

(516) 483-1110 connect@hwcli.com www.hwcli.com
150 Broadhollow Rd. Ste. 118 Melville, NY 11747